

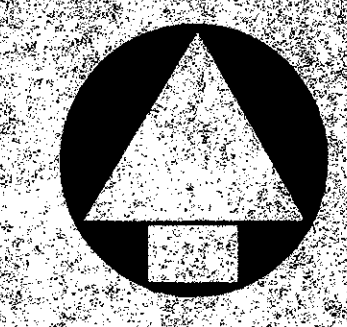
43/30

# BOCA CASA (P.U.D.)

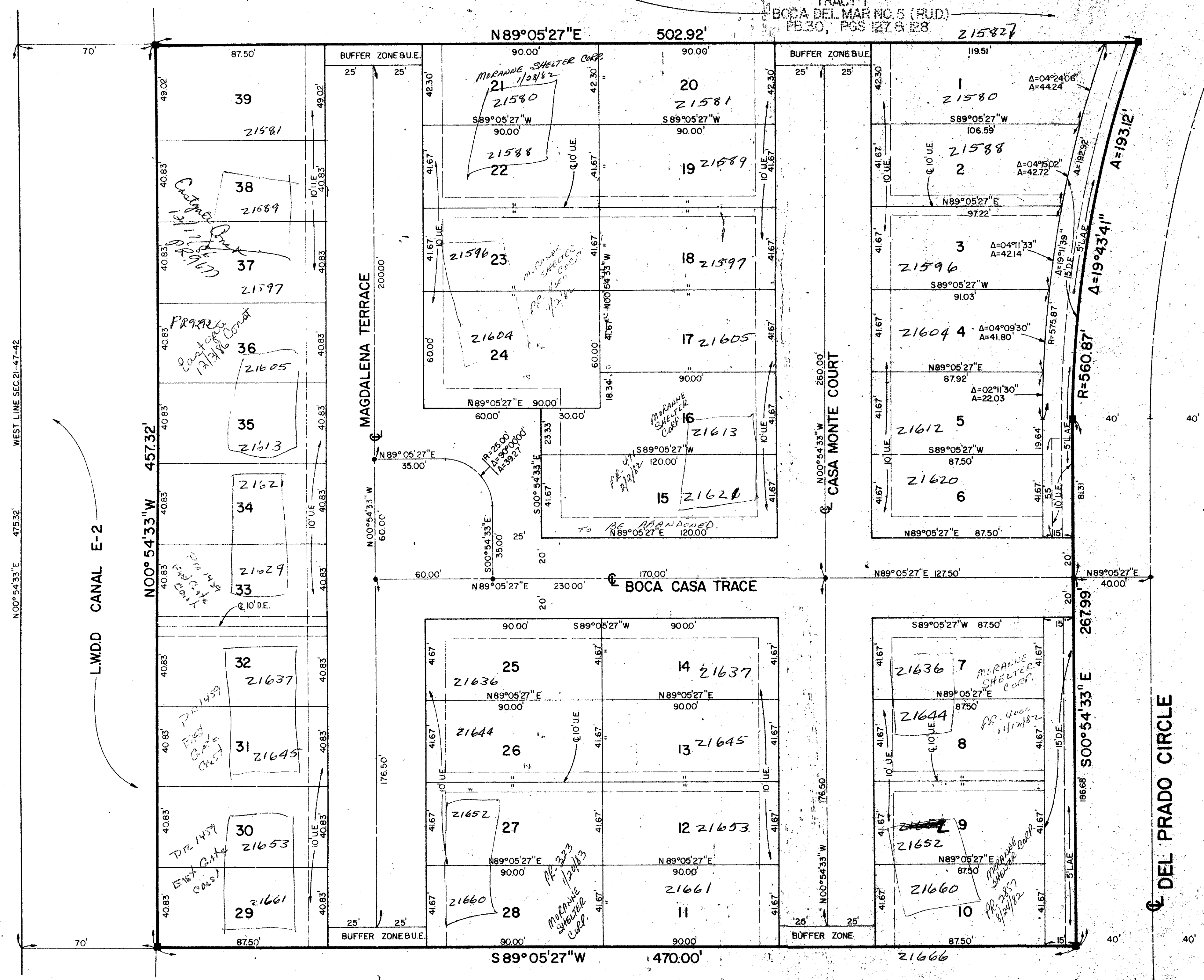
BEING A REPLAT OF TRACT 3, BOCA DEL MAR NO. 5 (P.U.D.) ACCORDING TO THE PLAT THEREOF AS RECORDED IN PLAT BOOK 30, AT PAGES 127 AND 128 OF THE PUBLIC RECORDS OF PALM BEACH COUNTY, FLORIDA. SAID LAND LYING IN SECTION 21, TOWNSHIP 47 SOUTH, RANGE 42 EAST, PALM BEACH COUNTY, FLORIDA.  
AUGUST, 1981

TRACT 1  
BOCA DEL MAR NO. 5 (P.U.D.)  
PB. 30, PGS 127 & 128

30



STATE OF FLORIDA  
COUNTY OF PALM BEACH  
THIS PLAT WAS FILED FOR RECORD AT THE CLERK'S OFFICE OF THE COUNTY OF PALM BEACH, FLORIDA, ON THIS 19th DAY OF JULY, 1981, AND DULY RECORDED IN PLAT BOOK 30, ON PAGES 127 AND 128.  
JOHN B. DUNKLE, CLERK  
CIRCUIT COURT  
BY: \_\_\_\_\_



PLANNED UNIT DATA

TOTAL AREA THIS PLAT	5.716 AC.
GROSS PAVED AREA (STREETS & DRIVEWAYS)	0.852 AC.
EFFECTIVE BASE RESIDENTIAL AREA	4.864 AC.
TOTAL UNITS THIS PLAT	39 UNITS
OPEN SPACE THIS PLAT	3.583 AC.
DENSITY	6.823 UNITS/AC.

TRACT 7 BOCA DEL MAR (P.U.D.)  
PB. 30, PGS 127 & 128

0205-316

43/30

**Meridian**  
Surveying and Mapping, Inc.  
2328 So. Congress Ave.  
Suite 410  
West Palm Beach, Florida 33406  
BOCA CASA (P.U.D.) JULY 1981  
1981-021